

"WASTE MANAGEMENT CHALLENGES IN WEST AFRICA:

Why Do We Care?"

Ricky McWhorter, Associate Director
Ghana West Africa Missions

THE CHALLENGE

Ghana West Africa Missions | Searcy, AR | gwam.org | rmcwhorter@gwam.org | 256-566-9220



Ghana West Africa Missions | Searcy, AR | gwam.org | rmcwhorter@gwam.org | 256-566-9220



Ghana West Africa Missions | Searcy, AR | gwam.org | rmcwhorter@gwam.org | 256-566-9220

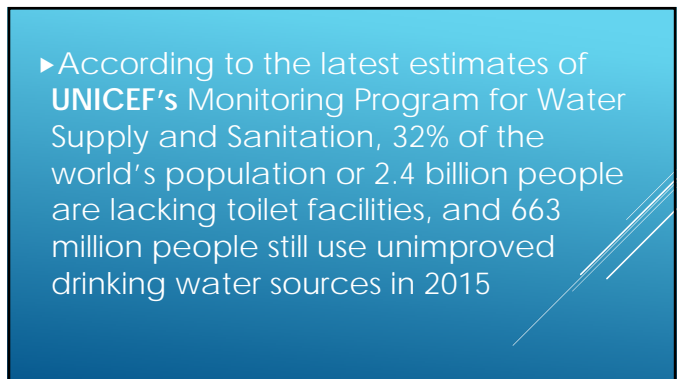


Ghana West Africa Missions | Searcy, AR | gwam.org | rmcwhorter@gwam.org | 256-566-9220



Ghana West Africa Missions | Searcy, AR | gwam.org | rmcwhorter@gwam.org | 256-566-9220





GWAM.org



CREATING IMPACT IN NORTHERN GHANA BY HELPING PROVIDE CLEAN WATER, SANITATION AND HYGIENE TO PEOPLE LIVING IN EXTREME POVERTY.

Ghana West Africa Missions | Searcy, AR | gwam.org | lmchworter@gwam.org | 256-566-9220



Making a Difference in Communities in Northern Ghana

Ghana West Africa Missions | Searcy, AR | gwam.org | lmchworter@gwam.org | 256-566-9220



Ghana West Africa Missions | Searcy, AR | gwam.org | lmchworter@gwam.org | 256-566-9220



Creating Opportunity

Ghana West Africa Missions | Searcy, AR | gwam.org | lmchworter@gwam.org | 256-566-9220



Duuni Village Northern Ghana

Ghana West Africa Missions | Searcy, AR | gwam.org | lmchworter@gwam.org | 256-566-9220



Latrines for Schools

Ghana West Africa Missions | Searcy, AR | gwam.org | lmchworter@gwam.org | 256-566-9220





Ghana West Africa Missions | Searcy, AR | gwam.org | rmcwhorter@gwam.org | 256-566-9220



Ghana West Africa Missions | Searcy, AR | gwam.org | rmcwhorter@gwam.org | 256-566-9220



Ghana West Africa Missions | Searcy, AR | gwam.org | rmcwhorter@gwam.org | 256-566-9220



Ghana West Africa Missions | Searcy, AR | gwam.org | rmcwhorter@gwam.org | 256-566-9220



COSTECH SCIENCE & Technology School

Ghana West Africa Missions | Searcy, AR | gwam.org | rmcwhorter@gwam.org | 256-566-9220



GWAM Impacting - Teaching

Ghana West Africa Missions | Searcy, AR | gwam.org | rmcwhorter@gwam.org | 256-566-9220



REDUCES RADICALISM
EMPOWERS FUTURE
CREATES SUSTAINABILITY

Ghana West Africa Missions | Searcy, AR | gwam.org | imcwhorter@gwam.org | 256-566-9220



MAKES US BETTER
PEOPLE

Ghana West Africa Missions | Searcy, AR | gwam.org | imcwhorter@gwam.org | 256-566-9220



GWAM.ORG
FACEBOOK.COM/GWAMMISSIONS
TWITTER:@GWAMMISSIONS
INSTAGRAM.COM/GHANA_WEST_AFRICA_MISSIONS/

Ghana West Africa Missions | Searcy, AR | gwam.org | imcwhorter@gwam.org | 256-566-9220



Clean water changes everything...

Ghana West Africa Missions | Searcy, AR | gwam.org | imcwhorter@gwam.org | 256-566-9220

