

# Novelis

**THE BALDWIN COUNTY STORY  
OF SITE PREPAREDNESS**

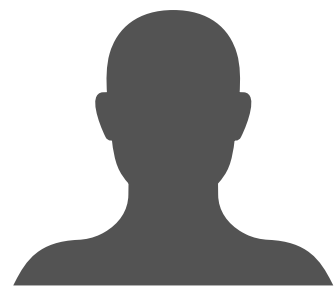


**BALDWIN  
COUNTY**

ECONOMIC  
DEVELOPMENT  
ALLIANCE



# Novelis



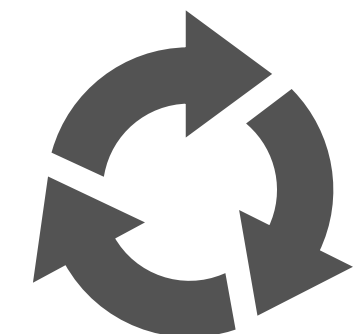
Leadership  
& Foresight



Strategic  
Investment &  
Preparation



The RIGHT  
Company



Sustainable &  
Impactful  
Economic  
Development



**BALDWIN  
COUNTY**

ECONOMIC  
DEVELOPMENT  
ALLIANCE





2008





2013





2020





1.5 MILLION SF  
BUILDING PAD



An aerial photograph showing a large, rectangular, cleared area of land, likely a building pad, surrounded by dense forest. The cleared area is light brown/tan, contrasting with the dark green of the surrounding trees. A road or path runs along the left side of the cleared area, and another road or path runs along the bottom right. The text "1.5 MILLION SF BUILDING PAD" is overlaid in white, sans-serif font in the upper right quadrant.

1.5 MILLION SF  
BUILDING PAD



# ON-SITE RAIL BED



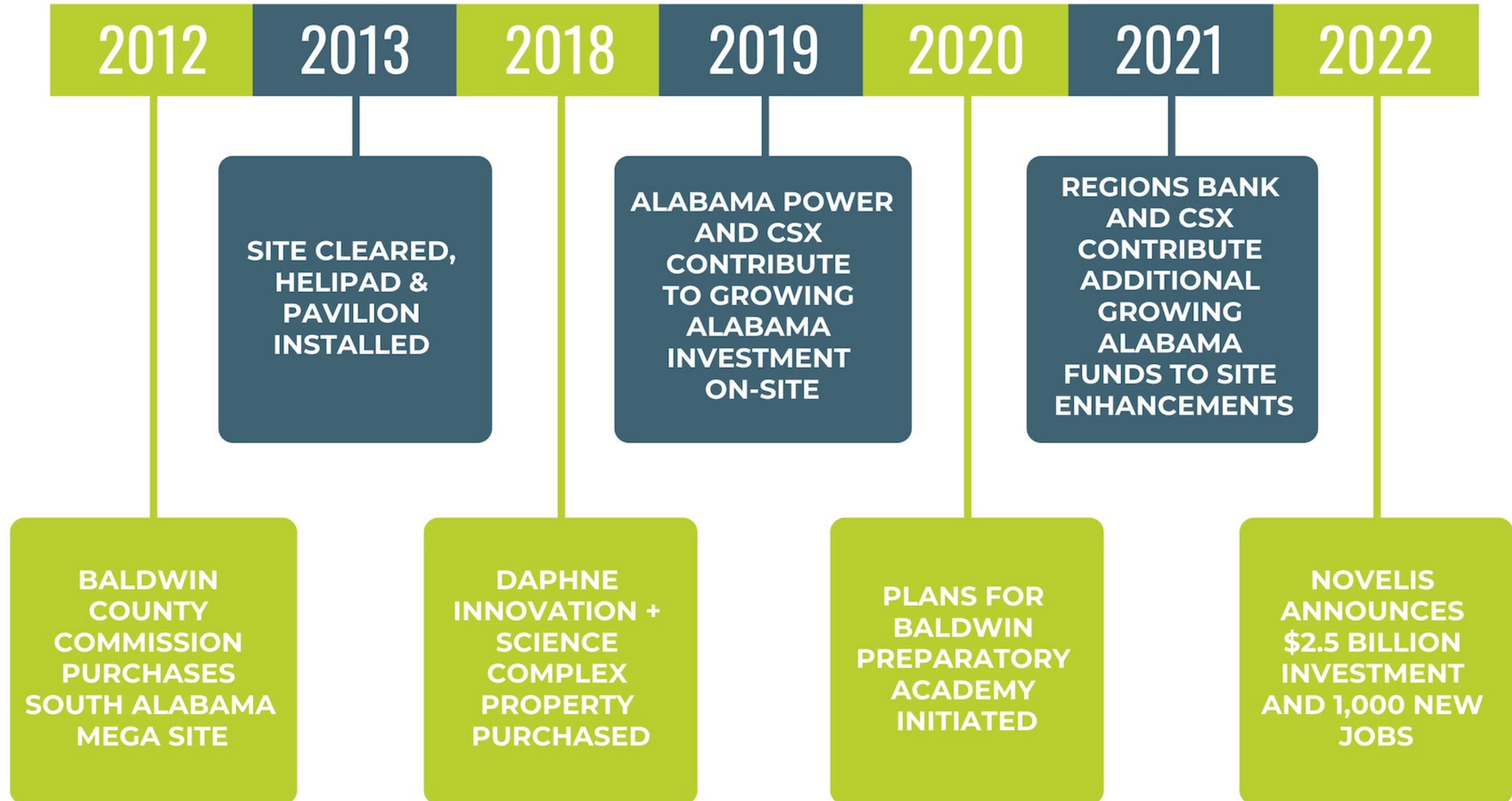


ON-SITE RAIL BED





# SITE PREP TIMELINE





# WHO IS NOVELIS?

- Leading producer of flat-rolled aluminum products to the aerospace, automotive, beverage can, and specialty markets
- World's largest recycler of aluminum
- 14,650 employees (5,100 employees in North America)
- Headquartered in Atlanta, with 33 manufacturing locations across 9 countries





# Novelis

## BAY MINETTE FACILITY

\$4.1 BILLION  
INVESTMENT

APPROX. \$5 MILLION/YR IN  
PROPERTY TAX REVENUES  
FOR BALDWIN SCHOOLS

1,000 NEW  
DIRECT JOBS

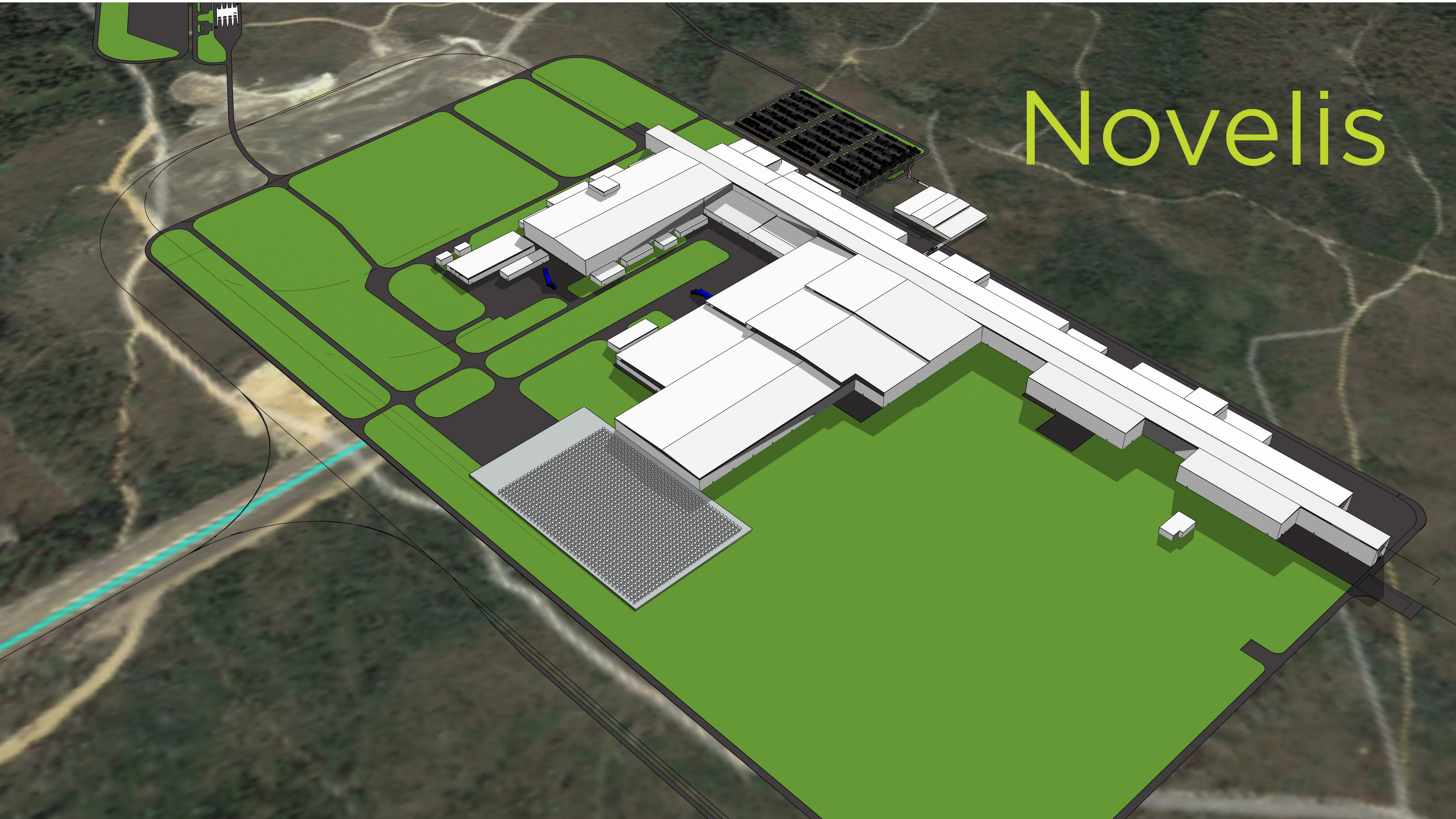
900 NEW, PERMANENT  
INDIRECT JOBS

AVERAGE  
ANNUAL WAGES  
OF \$65,000/YR

53% HIGHER THAN AVERAGE  
WAGE FOR BALDWIN  
COUNTY WORKER



# Novelis







Novelis











# Novelis

## SUSTAINABILITY



- Recycles 75 billion used beverage cans across the world each year
- Expects to recycle 15 billion more used beverage cans in Bay Minette each year
- Committed to reduce carbon emissions by 30% by 2026 and become carbon neutral by 2050 or sooner



# BEVERAGE CAN DEMAND

---

Strong customer demand and preference for domestic supply drive the urgency for capacity expansion in North America. Can manufacturers have invested \$4.1B since 2018 on new capacity requiring +680,000T of additional can sheet.



# RECYCLING

- Aluminum is infinitely recyclable, meaning it can be recycled over and over without losing any of its chemical properties
- Nearly 75% of all the aluminum ever made is still in use today
- Making recycled aluminum only takes around 5% of the energy needed to make new aluminum — reducing carbon emissions and saving money for businesses and end consumers





# MATERIALS RECYCLING FACILITY

- 50,000 square foot, \$25M materials recycling facility currently under construction adjacent to Magnolia Landfill in Summerdale
- Curbside recycling to be available to all Baldwin County residents in 2025
- Will reduce costs for municipalities already recycling
- Will process 12,000 tons of product annually with a capability of up to 40,000 tons
- Will partner with Novelis to recycle aluminum



**BALDWIN  
COUNTY**

ECONOMIC  
DEVELOPMENT  
ALLIANCE



